

# ODU Magazine



## What's In The ODU Boat House?



**ALSO FEATURING THE ODU TACKLE BOX**

**ODU**

# ODU's Boat Buyer's Guide and Tackle Guide Rolled Into One. Enjoy!



Editor: Larry Thornhill

Assistant Editor: Bill Schwarz, [bill@odumagazine.com](mailto:bill@odumagazine.com)

Publishing Team: Bill Schwarz & Richard Barker

Photographer: Kathy Barker

Advertising inquirers for our Fishing Magazines, ODU Fishing News or ODU Hunting News should be e-mailed to: <mailto:webmaster@odumagazine.com>

Business Address: 4315 Cross Ridge Ct., Valrico, FL 33594

**ODU**



# BIG FISH

[www.bigfishtackle.com](http://www.bigfishtackle.com)

## BASS FISHING BOARD



**Awesome Bass Fishing Tips,  
Product Give-Aways,  
Instant Answers To All  
Your Bass Fishing Questions!**



**Fishing Forum with over  
100,000 Members**

**CLICK HERE TO VISIT THE FORUM NOW**

**[www.BigFishTackle.com](http://www.BigFishTackle.com)**

**ODU**





## Phoenix 618 Pro

Redefining the word standard... If you are looking for a 18' 6" boat that has all the standard features of a 21' boat, look no further. Standard with the totally enclosed driver console, rotating tackle system, under-seat net storage and buddy rod locker. This boat is sure to be the talk of the season. The knit type construction is the same as all boats that we build. Add to that the same stainless latches and fittings and you will not find a better boat for your dollar. To Read More on the 618 [Click Here](#).



## Bass Cat 2012 Eyra

The Eyra has been termed a "bridge" boat from inception. Your first thought while admiring it is that it will in fact go from bridge to bridge in break-neck speed, depending on your set up of course. But, that's not the intended meaning. It simply means you will be at home in the cockpit with an economical 200 horses, or with a high output 250 bolted to the rear. The range in ponies is the goal on this hull, to go along with the throttle pounding performance. It all depends on your mission, what your experience is and your equipment of course.

The hull utilizes a running surface developed from a design that began over four years ago, and locked it in for the Eyra a few years back.

This boat is designed to maximize it's strengths of enhanced handling and fuel mileage statistics. It offers you the ability to perform at the 70 MPH mark with extremely impressive handling ... all with a 200 HP engine. To Read More on the Eyra [Click Here](#).



**ODU**



## THE EVOLUTION OF THE Z500 SERIES CONTINUES

Best-selling designs raise the bar again with additional fishing features

Carrying a long wish-list of total performance features, the now-legendary Z500 Series has taken anglers across the country to millions in tournament winnings and in the process, became the best selling

tournament bass boat of the modern era. In 2012, the integration of new interior features, driven by angler feedback, has once again served to further elevate Ranger's flagship line – continually distancing the popular Z500 Series from the rest of the field.

Two models in particular, the Z520 and Z522, will enter the 2012 model year with a long list of refinements. Most notably, both boats will feature a raised front casting deck, delivering the optimum height for flipping and pitching in bass-filled shallow waters. Without changing the highly acclaimed hull design, the increased height of the casting deck will in turn allow more space in the boats' storage and rod lockers. Also on the front deck, anglers will find a recessed foot pedal standard on all 2012 Ranger Z500 Comanche Series models.

"On a tournament day, it's hard to spot a boat that's not a Ranger Z-Comanche – that tells you a lot about the boat. People who fish for a living aren't going to trust their livelihoods to anything less than the best equipment available," said Ranger Pro Mark Rose, fresh off a FLW Tour victory and currently ranked 3rd in the world among bass anglers. "One or two big fish each tournament can mean the difference between a win and a loss – or making it to the Forrest Wood Cup. And with so many of these big fish up shallow, flipping can often be the only way to get to them.

The new raised deck gives me the perfect height for flipping under overhangs and allows me to be even more accurate and efficient with my presentation." To Read More on the Z500 Series [Click Here](#).



**ODU**



# THE BASS UNIVERSITY

[www.thebassuniversity.com](http://www.thebassuniversity.com)

## is coming to **Orange Beach, AL** March 31 & April 1, 2012

Register  
today to be a  
part of this  
unbelievable  
event

Do you want to take your bass fishing to the next level?  
The Bass University offers something for every angler, beginner or veteran. Register for the Bass University and learn tips and techniques from the pros who know.

The Orange Beach Bass University Topics include:  
The Alabama Rig with Paul Elias, Bass Fishing – The Next Level,  
Football Jig, Lipless Crank baits, Finesse Strategies,  
Deep Diving Crank baits, Finding Bass Consistently,  
Structure Scan Sonar and much, much more.

### Our Speakers

**Orange Beach, AL**  
March 31 and April 1, 2012

Pete Gluszek  
Randy Howell  
Mike McClelland  
Mike Iaconelli  
Paul Elias  
Gary Klein



**BASSIN'**



### Seminar Times

8:00 a.m. to 5:00 p.m. Saturday  
8:00 a.m. to 5:00 p.m. Sunday

### Seminar Costs

Adults : \$199.00  
Youth : \$175.00  
17 and under/students

Check [www.thebassuniversity.com](http://www.thebassuniversity.com) for additional dates and times

© 2012 the bass university • all rights reserved

Special Thanks to  
our Sponsors







## NITRO® Z-9

In the world of professional bass fishing, one boat that always stands out is the NITRO® Z-9. Day in and day out, it's the trusted choice of the world's leading anglers, including Kevin VanDam, Edwin Evers, Rick Clunn, Ott DeFoe and more! Inside and out, this is a fully-featured tournament contender.

Inside, the boat uses its 20' 9" length and 96" beam to provide plenty of deck space to move around as you cast the day away. This width also provides a stable platform and all the features tournament anglers want in a boat.

Starting aft, anglers will find a wide, raised casting deck,



complete with a fold-down fishing chair. Beneath the deck, there is a molded aft compartment with easy access to rigging, as well as a removable gear tray. The deck also provides port and starboard drop-in storage boxes with removable inserts, so you can fill them up and organize them on land and then drop them in the boat later.

And then there's the tournament-proven Guardian™ livewells. Both 20-gallon livewells are rotomolded with rounded corners to protect your catch. They also both feature aerators, timers, recirculator pumps and oxygenators to ensure your catch is healthy when you get to the weigh-in. To Read More on the Z9 [Click Here](#).



## New - Bullet 21SS

In celebrating their 30th Anniversary, Bullet Boats is introducing an entirely new model, the "21SS". The SS is like no other Bullet produced before. It has both a new hull design and an entirely new look. This new design results in instant acceleration, superb handling, unsurpassed fuel mileage and fantastic performance. If it is possible to improve on the existing line, Bullet has definitely done it! The 21SS is an even 21feet with a 91" beam. It offers even more storage than not only the existing Bullet models, but any other brand boat its size. To Read More on the 21SS [Click Here](#).



**ODU**



## Stratos 189 VLO

Tournament ready design big on features, standard equipment – even bigger value

The days when tournament anglers relied on short fiberglass rods and wooden plugs are all but gone. Bass fishing has evolved and the equipment used by today's professional has to keep pace. Enter the new Stratos 189 VLO – bass boat evolution accelerated with a wealth of tournament-specific features new and unique to the marine industry. The 189 VLO arms its owners with virtually every conceivable advantage in their quest for on-water success, including a list of features that dominate other boats in its class, all at a price tag under \$30,000.

Measuring 18 feet, 9 inches, the Stratos 189 VLO is rated for 150 horsepower and available with a host of precision-matched, factory-rigged outboards. This future-inspired fishing machine flexes its muscles on the water with a strong hole shot and top-end speed to quickly deliver serious anglers wherever they need to go. The 189 VLO balances its appetite for power with ultra-responsive hydraulic steering and an intuitive layout that delivers sportscar-like handling in rough waters.

“The Stratos 189 VLO is a completely new design; a whole new layout,” said Stratos Pro, Mike McClelland. “It’s a boat that’s thoroughly grounded in some intense R&D work. Now that I’ve been able to spend a lot of time with it, I’m incredibly impressed. I know this VLO is going to fill a major need for guys looking for that next generation in boat design.”

To Read More on the 189 VLO [Click Here](#).



**ODU**





## Triton 19XS

The Triton® 19XS is a powerhouse in the 19 foot market. With a beam of 95 inches and 19'9" long the 19XS was designed for the serious tournament angler. With an enormous front casting deck and the signature XS hull, the Triton 19XS has rock-solid stability, even with

two anglers fishing up front. It has a 225 hp rating, 46-gallon fuel tank and state-of-the-art performance hull give it the speed, range and riding comfort demanded by today's highly competitive anglers. Storage abounds in this boat with plenty of space for all your tackle. Triton offers the ability to flush mount today's larger electronics, the dash can hold up to a 10.4" unit and the bow will take an 8.4" - an industry first! Add in Triton's new removable passenger console and you and your partner are ready for serious tournament action! To Read More on the 19XS Click Here.

A corkboard featuring three photographs of people fishing. The first photo shows a woman and a child. The second photo shows a young boy wearing sunglasses and a life vest, with the handwritten note "Bobby's 1st trip" below it. The third photo shows two men fishing. A large sign is pinned to the board with the text "KEEP AMERICA FISHING The Voice of the American Angler". Below this, it says "People want to stop you from fishing. We won't let that happen!" and "Get Involved Today at www.KeepAmericaFishing.org". A red circle with a diagonal line through it and a fishing silhouette is also on the sign. To the right is a circular logo that says "FISH! KEEPAMERICA FISHING.ORG". A yellow sticky note on the left says "Join KeepAmericaFishing".



KeepAmericaFishing™ is a registered trademark of the American Sportfishing Association.

**Get Involved Now at [www.KeepAmericaFishing.org](http://www.KeepAmericaFishing.org)!**

**ODU**





## Ranger Z117

Ranger's legendary Z Series quality now sized to fit any lifestyle.

Custom building dreams for anglers everywhere is a commitment the folks at Ranger Boats have made job one since their beginning nearly 45 years ago. To that end, they've continued to reinforce the legendary performance and top-shelf features they're so well known for and have just introduced another impressive addition to the popular Z Series lineup.

Measuring 17 feet, 6 inches and rated for 115 horsepower, the all-new Ranger Z117 is available with a wide range of precision-matched outboards and delivers the advanced fishability and best-in-class heritage of the Ranger Z Series for under \$30,000. In addition to the incredible price tag, show-stopping great looks and Ranger's well-known resale values, this boat and matching single-axle trailer can be easily towed with compact trucks and SUVs and will fit into most garages, while the popular 115-horsepower designation consumes less fuel and oil – making the Ranger Z117 accessible to anglers who would otherwise be forced to purchase used boats or boats that lack Ranger's reputation for quality and fishability. To Read More on the Z117 [Click Here](#).





## Phoenix 921 ProXP

From our passion to produce the finest fishing platform available we bring you the Phoenix 921 Pro XP. Handcrafted to give you the best fishing platform in the industry. Through the incorporation of the patented Diamond Vee hull design we have produced the softest, driest, best handling hull design in the industry. The fishermen-friendly layout includes a rod storage rack capable of holding fourteen 8' rods, tackle storage capable of holding twenty-three 3600 series and seven 3700 series Plano-style boxes and a front casting deck to be envied by all. To Read More on the 921 ProXP Click Here.

## Triton 21HP

The flagship of Triton®'s tournament bass boat lineup, the 21HP. It is bass fishing's hottest-performing 21-footer! Rated for up to 300 hp and a 46-gallon fuel tank, you will be able to put the hammer down and experience teary-eyed acceleration and top-end speed that will absolutely peel the paint off your competition! This is the boat that the top tournament pros choose, it is a formidable tournament rig with monster casting decks, cavernous storage space and roomy console! Triton offers the ability to flush mount today's larger electronics, the dash can hold up to a 10.4" unit and the bow will take an 8.4" - an industry first! Plus on



days when the weather isn't perfect, you can add in a removable passenger console for added comfort for your partner. If you're a serious angler with a bit of a wild streak, this Triton is the one for you! For all the details on the hottest rig on the water, visit [www.tritonboats.com](http://www.tritonboats.com). To Read More on the 189 VLO Click Here.

**ODU**





## NITRO® Z-7

As the World's #1 Selling Fiberglass Bass Boat, the NITRO® Z-7 boat combines tournament-proven features, exhilarating performance and an industry-leading price point in one affordable, easy-to-handle bass boat package.

True to its “performance bass boat” definition, the Z-7 is able to achieve speeds of more than 60 MPH with the standard Mercury® 150 L OptiMax® Pro XS outboard. It does this by combining a variable deadrise hull design with the award-winning Rapid Planing System (RPS) transom. The RPS transom is a stepped hull design that results in faster holeshots with little to no bow rise, better overall speeds and handling and great performance in shallower waters.



### Tournament Wear

Look Great! Feel Great! Do Great!

Quality Fishing Jerseys, apparel,  
sunblock hats and more.



10% discount use or mention code ODU10  
Visit [TournamentWear.com](http://TournamentWear.com)  
or call 321.214.9557

Inside, the Z-7 is designed and outfitted with everything tournament anglers, and weekend warriors, look for in a bass boat. To Read More on the Z7 [Click Here](#).

**ODU**



# **Shake-E-Footballs**

## **Shakey Head Style Football Jig Head**

- Flexible Nickel Titanium Spring
- 6 Great Colors
- Picasso developed Duraseal Coating
- Chip Resistant
- Super Smooth
- Extra Hard



724-409-4400  
[www.PicassoLures.com](http://www.PicassoLures.com)

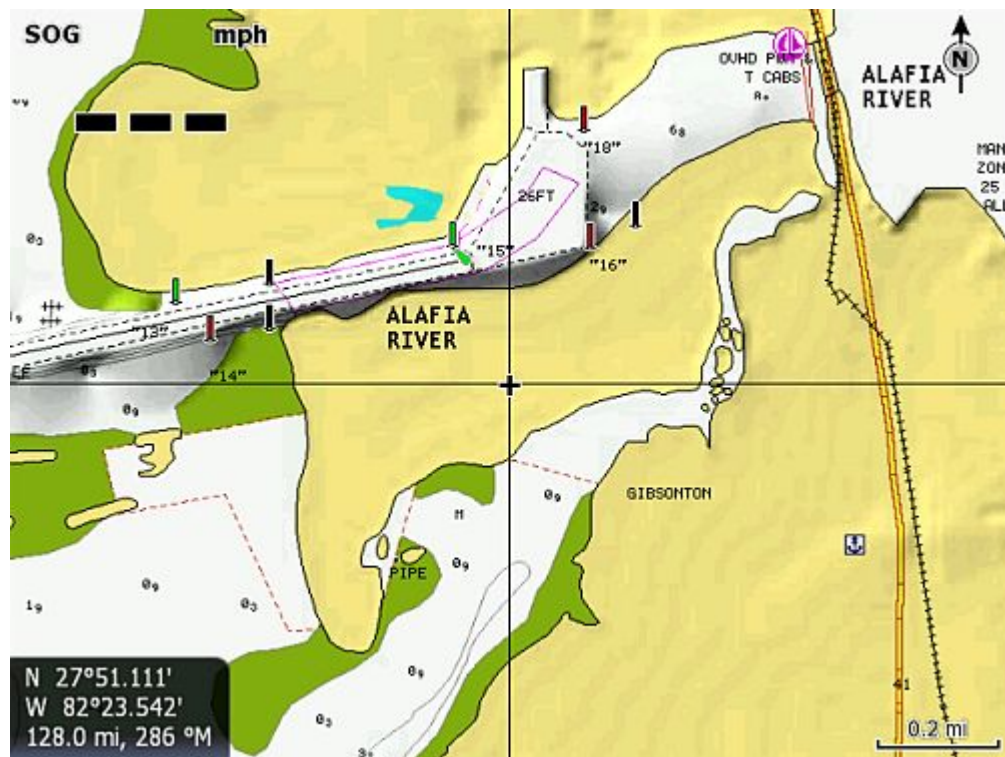


**ODU**



# The Basic “How To” of GPS and GPS Charts

By Paul Michele



“Sure I use my GPS to ride around and use my sonar to see the bottom, but aside from that, I really don’t know how to use it”. I couldn’t tell you how many times in the last year I personally have heard this quote – out of the mouths of everyone from the weekend warrior to some very seasoned pros. Yes, we all like to just slap that machine on there,

run around our favorite waters, spot areas that “look good”, and then hope our sonar tells us more. I mean, who really wants to read a 127-page instructional manual? Hit the power button and let’s go fishin’!

I myself am somewhat guilty of this (if it wasn’t for my GPS Tom Tom, I still wouldn’t own a road map!) but you’ve spent \$500 - \$3000 or more on this GPS fishing tool, and wouldn’t you want to use it and get every dollar’s worth from it? There are a few simple pointers that I usually talk about and think are worth sharing.

In preparing for a fishing trip, we start the night before by grabbing our lures and considering what the bite will be from our prefishing or our network of friends’ phone calls. Doing the same thing with your GPS charts can prove to be just as valuable. If your boat is nearby, turn on your plotter and do a little preplanning. There also exists some new software such as the Navplanner that will allow you to look at charts on your computer and make some plans before you even get on the water. In fact, you should



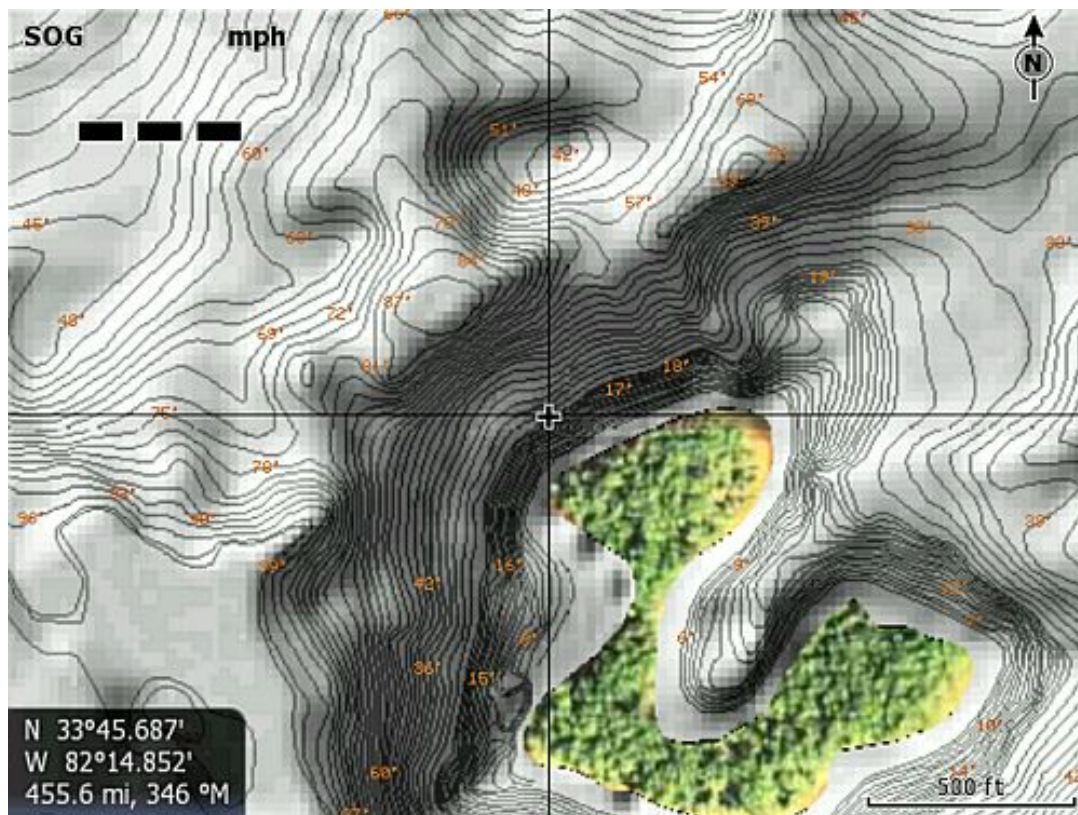
not only make a plan but set waypoints, routes, and save these to your machine or onto an SD card from your computer and transfer all that data to your plotter in the morning. Now, how do I read my chart?

Your GPS is designed to navigate, but is only as good as the chart it reads and how the angler understands it. With technology improving on a seemingly six-month basis, so is the art of cartography. There are a number of lakes that exist that have been surveyed all the way to one foot contours. What that means simply is every time there is a change of depth of one foot or more, there is a new contour line on your chart. This puts together a true picture of the bottom, giving it shape. With these lines an angler can see exactly where there could be humps, holes, a slow gradual point, shallow flats, or a steep ledge - any type of structure that we know fish like to hang around. A ledge, for example, is going to look like someone drew a black magic marker line on your chart versus a thin pencil line. Why? Because all of those one-foot contours are changing so quickly that the lines become tight together and form this thick black line. The thicker the line, the steeper the ledge. If you aren't sure, the new 3D perspectives on charts can help you identify some of these features more easily, especially deep water lumps. Once an angler identifies these areas and switches back from 3D to 2D, they can see how those contours created this virtual 3D lump or hole. If that's what you are looking for...mark it. There is spot one.



In understanding more on charts, there are charts with satellite overlays. These aren't just for pretty pictures and to look cool (which they do) but also to help an angler understand an actual picture of what is there. The emergence of Navionics Platinum charts in both fresh and saltwater has helped anglers get a better picture of their fishing waters. A Navigation chart, to keep it simple, helps the boater navigate safely on the water. Some of the best fishing spots I have found are not necessarily "navigable" by all boats. These spots could be up rivers and creeks on a lake or back marshes and hidden canals in mangroves on saltwater flats. The only way these can be found is by putting the satellite overlays onto your chart. You now get a real overhead satellite image of what the area looks like and opens up all new fishing grounds in some cases. I've seen sandbars appear, reefs, potholes, creeks





through islands, and rivers extending much further up beyond what the navigation chart shows. With a Platinum chart, you can zoom in and run on these spots. Of course, use caution and watch your sounder depending on your boat draft, but you will be able to navigate on these images as your boat icon will show you running over these satellite images. Now get into some of those lesser known areas!

Lastly, in setting a waypoint and revisiting this new fishing spot, a quick tip. Make sure that you are EXACTLY over that location when you mark it on your GPS. This way when you do your GOTO, the waypoint is exactly where you want it to be. A common occurrence in traveling back to this waypoint is to run right to it and then travel over the top of the spot. Let's say it's freshwater and it's a brush pile in 10' of water. The angler runs to the spot, goes over it, thinks "There it is" and begins fishing. Meanwhile Mr. bass gets spooked or warned by this noisy action and thinks, "Well...it must be Saturday and here comes one of those funny clouds dropping a nuclear colored I don't know what it is on my head again". Instead of this, since you have the spot exactly marked, run within 300 yards of it then trolling motor forward. Turn your boat off to the side of the waypoint a bit and don't run straight at it but to the side of it. On your plotter you will notice that the waypoint distance will show how far off right or left you are. PERFECT! Now, when you are 75 feet to the right of your spot with your trolling motor, make the cast. You know exactly where your spot is at 75' left or right of you and casting at a now unwary fish that hopefully is off guard and hungry. Plus with today's sidescan sonar, the fishing spot will be clearly shown on your plotter as well and really have it dialed in. All the while, you'll have that spot undisturbed. Plus if you are offshore fishing, you won't be right over the spot so the "waypoint runners" can't come within 20' of you and steal your spot as easily.

There is still more that can be discussed on utilizing your GPS and your GPS charts but to continue I could refer back to the 127-page manual mentioned above. These few tips cover some of the basic but most important tools the GPS can offer an angler. Take the time to read and learn these few simple tips and your time on the water is bound to be more productive.



## Bass Cat Margay

This brand new 17'7" all fiberglass Margay will get you fishing on just about any body of water in comfort ... and get you around in a hurry. Rated from 70 to 150 horses this rig pushes upper 60's with a Mercury OptiMax 150 ProXS. Its 90" beam offers a very broad fishing platform both front and rear.

In fact the front deck's center rod box holds 12-14 rods with several cubic feet of deck area storage underneath those rods for tackle or misc. storage. Outside that rod compartment you will find two (2) large deck storage compartments. A step down ice chest moves you to the rear, which features two additional storage compartments and battery and fuel section. You will also find a cool stainless full ladder, a great safety feature. To Read More on the Margay Click Here.



**Wave Introduces the new  
Super Soft Pro Series!**



**www.WAVEFISHING.com**

**ODU**





## BULLET 21XRD

Bullet 21 XRD hull design offers a fantastic ride and great handling in even the worst of conditions. It is constructed using Kevlar and balsa core construction methods. This results in an extremely strong boat that is much lighter than the typical mass produced bass boat. The lighter weight is beneficial both on and off the water. Bullet is a limited production builder, offering many custom color combinations, features and options. To Read More on the 21XRD [Click Here](#).

- Front platform is 10 inches longer and 2 inches higher than 21XD for more fishing room.
- Rear platform is 2 inches higher than other models.
- Console is 2 inches higher and moved 2 inches forward for larger cockpit area and ease of operation.



**ODU**











# Everglades®

*by Dougherty*

## Everglades 230 DC, The Perfect Multi-Purpose Family Sport Boat

Everglades first Dual Console was designed for families who love water sports. Like all Everglades boats, the 230 DC is well equipped for fishing, with a brand-new arch design featuring an integrated sun-top with built-in stainless steel rod holders, antenna mounts, and outrigger mounts. A 27-gallon live well and 60-gallon fish box offer plenty of room for your bait and your catch.

The console has a close out door for easy access to the bow and protection from the elements, and in true Everglades' fashion, a revolutionary new windshield design features completely frameless forward glass, and handrails that are structurally integrated into the side glass wings. [To Read More on the 230 DC Click Here.](#)







## **Everglades 243 CC**

### **What a Bay Boat Should Be**

This wildly popular center console is maxed out for fishability. Drafting only 16 inches, Everglades 243 CC can easily take you into the shallows, and with Yamaha's F 300 V-6 behind her, she can get you to the next spot in no time.

Everglades' exclusive hardtop design has many unique features, including overhead life jacket storage, blue LED lights, white spreader lights, and built-in speakers. The ergonomically designed helm features a fiberglass-lined interior and Everglades' exclusive, adjustable sliding windshield.

Loaded with fishermen-friendly amenities, the 243 CC features large casting decks fore and aft, flip up stern seats, a combo leaning post/command seat with swing-up footrest, and even a standard port-a-potty for the ultimate in convenience. The bow area is fully padded on both sides, and powder-coated grab rails are right where you need them.

To Read More on the 243 CC [Click Here](#).



## Yar-Craft 209TFX

209TFX Tournament Fishing Extreme is designed to meet the needs of hard-core fishermen. When it comes to speed, storage and rough water performance, everyone else is fighting for second place! A Bass Cat Company!

To Read More on the 209TFX Click [Here](#).



# Yar-Craft

## BOATS

ODU



# "Every angler owes it to the fishery to use THE OXYGENATOR."

Denny Brauer, Pro Bass Angler  
B.A.S.S. Elite Touring Pro and Classic Champion

THE  
**OXYGENATOR**  
TECHNOLOGY ON BOARD

## HEAVY DUTY Commercial Oxygenator

Ideal for bait shops  
& small tournaments.

- 30 to 150 gallon capacity
- Sell livelier bait
- Less minnow loss
- Operates 12 volt DC or 110 AC

## SUPER Oxygenator

Handy for boats, buckets & coolers.

- Saves expensive bait
- 4 to 30 gallon capacity
- Operates 12 volt DC or 110 AC
- Perfect for substandard live wells
- Quiet Operation



## Cooler Kit Accessory Package for Super Oxygenator

- Recirculating pump, spray bar, plus thru-hole fitting



## Complete Oxygenator Package Pump with Cooler

- Great for minnows & the new minnow transport laws regarding invasive species
- Operates on 12 volt DC or 110 AC



TOURNA**MAX**  
THE  
OXYGENATOR



U2 PRO FORMULA<sup>®</sup>  
LIVE WELL TREATMENT

Best additive available on the market to keep bait & fish alive.

- Does NOT harden in the bottle like granular formulas
- Prevents dead fish penalties
- Removes chlorine & ammonia
- Relieves stress on captive fish, keeps expensive bait alive
- Replaces slime coating, stops bleeding



TournaMAX  
4-Tank Unit shown  
(up to 6 tanks available)

Tournament Organizers...  
we custom build for all  
types of weigh-ins.  
(basket and bag)

- Operates with 12 volt DC

## Pro Live Well FLUSH MOUNT

Mounts in your live well sidewall.

- Reduces dead fish penalties
- Release healthier fish
- Focus on fishing, not fish care
- Only draws 1/2 amp per hour
- A must for tournament pros & guides



For more info:

**KeepFishAlive.com**

O<sub>2</sub> Marine Technologies 952.881.1330



## War Eagle 961 Blackhawk

The all new 961 blackhawk has a beefed up hull that is .100 gauge heavy aluminum. The newly redesigned deeper V hull offers a smooth ride when crossing rough waters to allow for larger water inland opportunities. With an impressive list of standard equipment, the blackhawk is the only boat you need.

### Standard equipment:

Full skin out, wired foot trolling motor bracket, windshield, built in 40 gallon tank, running lights with rocker switches, hand rail, bilge pump, leaning posts, passenger seating with storage, bow storage, metal gas tank cover, large console with steering and bait well, rod holders, 2 additional seats with spiders.

To Read More on the 961 Blackhawk Click Here.

**Fishin' with a Mission**

**BUY A DECAL AND HELP OUR CAUSE!**

[www.mylittlebuddysboat.com](http://www.mylittlebuddysboat.com)

Autism Awareness  
FISHING WITH A MISSION

**ODU**



## War Eagle 861 Predator

The 861 has been drooled over by pro-staff members and sales representatives for months, but is now available for order. The 861 represents a new breed of War Eagle models that is loaded with standard equipment, hull features and all the bells and whistles.

The 861, or the Predator, includes rod straps for bass fishing rods, and extended rod boxes to accommodate longer crappie poles. The dual livewells are conveniently located in the bow and the rear. When you're pulling the crappie out as fast as you can, you don't have to worry about walking to the rear. Both livewells are 84 quart capacity and recirculating. Also located in the bow seat, is a round aerated baitwell for keeping your bait alive. This model boasts plenty of storage room, including two insulated ice chests, dry storage under seats, and added bow storage.



The interior is designed for comfort and convenience. Recessed drink holders, large comfortable seating, and low front deck provide the ultimate in comfort. The stylish console includes full instrumentation, no feedback steering and a windshield. The Predator is available in several color options including two-tone seats, that proves this is not your ordinary crappie fishing boat. Of course, all War Eagle models are available in your choice of seven (7) licensed camo patterns. To Read More on the 861 Predator [Click Here](#).



## Lowe FM185 Pro WT

If you're looking for a full-size, tournament-class rig the FM185 Pro WT Fishing Machine® is the right tool for the job. With its full windshield design, extra-wide hull and high freeboard you're

ready to attack the toughest conditions. And, they're fully-equipped with a stylish new dual console with plug & play gauges. Premium standard components include a Motor Guide® trolling motor, Lowrance® fish finder, bow and stern aerated livewells, locking center rod storage with organizer tubes, tons of additional storage and your choice of Mercury® power (up to 150 HP). If you're ready to step up to a full-size rig, this is the right tool for the serious, big water angler. To Read More on the FM185 Pro WT [Click Here](#).

## Lowe Frontier 2070SC

All-Welded All-Aluminum Commercial-Grade Jon! Our extra-rugged, all-welded Frontier™ Jons are built to commercial grade standards. This added toughness is what gives the Frontier series the advantage over typical jons for hunting, fishing and work applications. Maximum strength and durability is ensured with SuperLock™ all-aluminum .080 gauge, 5052 H-34 construction with closely-spaced cross-rib substructures, solid extruded center keel plus TufDeck® aluminum alloy decks and floors. Additional standard features include: a pin-type pedestal seat base in the aft deck, an extruded aluminum accessory receiver gunnel and olive drab, baked-on acrylic paint. To Read More on the Frontier 2070SC [Click Here](#).



**ODU**





## **TRACKER® Pro Guide™ V-175 SC**

The TRACKER® Pro Guide™ V-175 Single Console provides anglers with a lot more of what they want in a Deep V.

It measures in at 16' 11" long with a spacious 96" beam and 82" bottom to provide a stable, solid fishing platform and plenty of room inside for casting, as well as a long list of fishing features.

At the bow, anglers will find a powerful Minn Kota® 55-pound thrust PowerDrive™ trolling motor with a convenient foot pedal. The raised bow deck also provides a base location for setting up one of the movable fishing seats, as well as a starboard storage compartment and an aerated 19-gallon port livewell with a removable bait bucket. It even has a center rod storage compartment that will hold rods up to 8' long and straps for securing more rods on-deck! To Read More on the V-175 SC [Click Here](#).



## **G3 Boats Eagle Talon 17 DLX**

G3 Boats announces the addition of the new Eagle Talon to their 2013 line-up of boats. The Eagle Talon 17 DLX literally flies off the trailer and symbolizes the American Dream with its well thought out design and its innovative wrapped graphics. Just one look at the Talon DLX



and anglers will be dreaming of good times, great fishing and cherished moments with family and friends. The Talon 17 DLX is built on a two-piece welded all-aluminum hull with an all-aluminum transom and is rated for a variety of engine options, from the fuel efficient Yamaha F50 to high performance Yamaha F90. To Read More on the G3 Eagle Talon [Click Here](#).

## **Polar Kraft Frontier 189 WT**

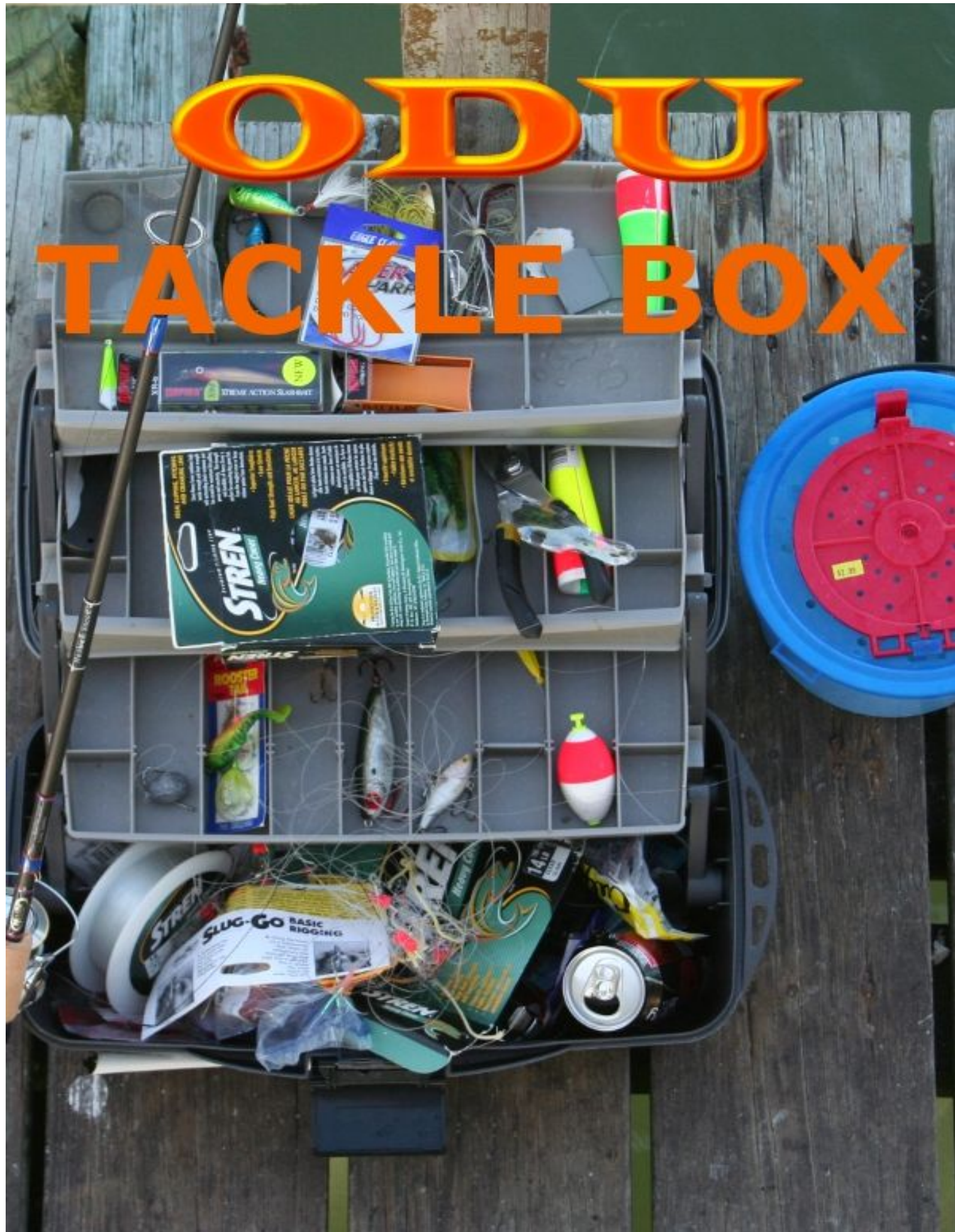
Have you ever heard anyone say they've got too much room for casting and fighting fish? Of course not! Aimed at "weekend warriors," who want all the benefits of a beefy, well-built fishing boat, as well as a solid value, the Frontier 189 WT hits the sweet spot right on the nose. With its all-around level deck design, the 189 WT makes it easy to fight fish from anywhere on the boat. And the walk-through windshield can help you extend your boating day by keeping you more comfortable on cold mornings. Built on the legendary Polar Kraft



Deep-V padded hull, the 189 is perfect for fighting larger species of fish such as muskie, because you can move throughout the boat knowing you'll have a clear path. To Read More on the Frontier 189 WT [Click Here](#).



# ODU TACKLE BOX



ODU



## ODU Tackle Box Rods and Reels



**Shimano's Sustain FG Spinning Reel** (left) boasts the company's X-Ship design, which is said to provide rigidity plus a tremendous amount of cranking power. A Magnumlite C14 rotor reduces resistance on rotation, resulting in a tremendously smooth action. A Rapid Fire Drag allows anglers to quickly adjust drag to an ideal setting while fighting fish.

**Pinnacle Producer XT Spinning Reel** (right). For pitching tubes into the dock, working a shaky head along a breakline, yo-yoing a drop shot rig in deep water, and a wide variety of light-line techniques, nothing beats the Producer XT. It's built strong to last long, with a bevy of cutting edge features to help you get your string stretched even when using braid.



**WaveSpin™ DHZ Spinning Reel** (left): WaveSpin reels are engineered to deliver a lifetime of tangle-free fishing and longer, more accurate casts. Fewer tangles means more time spent fishing and more fish caught. The Exclusive WaveSpin spool features guaranteed no-tangle technology for longer casts and less kinks. Unlike round spool tops, its jagged shape prevents slack line from catching on the spool during retrieves and forming loops that lead to kinks and tangled line.

With the **Noirwood series** of rods from **Denali**, our goal was to offer today's angler the most sensitive rod on the planet. Everything from the tip to the butt is designed with sensitivity in mind, and the end result is the highest caliber fishing rod on the market today. The Noirwood series offers the angler the absolute finest rod built from only the finest components ... assembled within the hands of America's Rod Craftsmen. (1<sup>st</sup> rod from left)



**Carrot Stix Wild Black Spinning Rods:** Every detail of these rods was developed for the absolute lightest weight without sacrificing performance. The nonsanded blank is key to how such a lightweight rod can maintain a high level of strength and sensitivity. Other weight-reducing details include long-casting Fuji® Alconite® micro guides, dual helical bias 30T construction and cork grip. Lifetime manufacturer's warranty. (2<sup>nd</sup> rod from left)

**Temple Fork Outfitters Gary's Tactical Series:** By utilizing a new proprietary scrim in conjunction with TFO's high modulus carbon fiber blank material, Gary was able to save weight and increase sensitivity without sacrificing strength. GTS blanks are tastefully finished; simply polished, with a thin layer of matte clear coat to enhance the natural luster of the fibers, TFO's trademark Color ID Split grip is further complimented by a two piece reel seat and a natural cork ring split grip. (3<sup>rd</sup> rod from left)

**ESP Spinning Rods:** Experience the newest sensory enhancement on these cutting-edge ESP Fishing Rods! With patent-pending Vibration Amplification Technology™ on solid graphite blanks, you'll feel every underwater movement. The combination of the lightweight rod (around 3 oz.) and highly-conductive alloy vibration disks in the handle allow you to feel the exact moment a bite hits, or the hook is set. (4<sup>th</sup> rod from left, picture enhanced to see reel seat)

Enhanced rod strength is right here with the **Wright & McGill Stormy Skies S-Glass Series Casting Rods**. Three separate layers of connective fibers construct these rods making them 25 percent stronger than fiberglass. These rods are remarkably light and feature a rebound rate that approaches high-modulus graphite blanks. S-Glass MaX Series provide excellent action with plugs and divers.

**ODU**



## ODU Tackle Box Reels and Accessories



**Shimano Caius Casting Reel** (left): Geared for high-speed 6.5:1 retrieves, this reel delivers effortless top-end speed with lightweight, performance-driven Shimano design. Three shielded stainless steel ball bearings for corrosion-resistant durability in the most punishing environments. Adjustable Easy-MAG II braking system prevents backlashes. Super Stopper anti-reverse for hard-hitting hooksets.

The **Quantum PT Smoke 100 Casting Reels** (right) are the lightest all metal Quantum PT reels ever made! The Quantum PT Smoke 100 reels feature a machined aluminum frame to reduce weight as well as an 8 PT bearing system for smoothness. The PT Smoke 100 also features a micro ACS cast control to make adjustments on the fly and a super smooth ceramic drag system.



The **T3 Ballistic Baitcast Reel** (left) is **Daiwa's** mid-level baitcaster to make use of the company's durable Zaion carbon material, and also features the new MagForce 3D cast control system. This offers fisherman a much wider range of cast control options. The new flip open "T-Wing" is design is the big innovation with this fishing reel. It gives the line coming off the spool extra space in which to more naturally flow during casts. This new design reduces friction because line is not forced to channel through a small opening and in theory will result in longer more accurate casts, as well as a more natural decent after your lures hit the water.



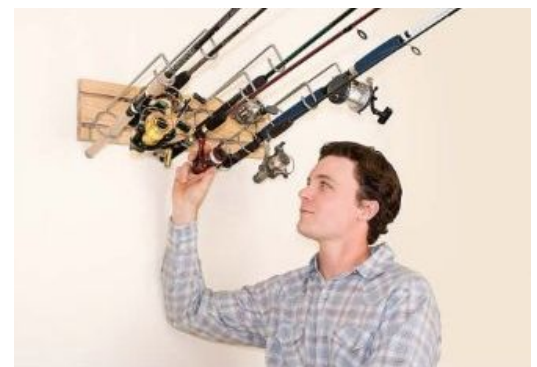
**Okuma Convector** level winds and line counters revolutionized the fishing tackle industry, offering a powerful gearing and drag system platform previously unattainable at the Convector's value-oriented price. Today, the Convector has grown to a position as a staple in salmon fisheries from Alaska to the Great Lakes, and everywhere in between. The Convector's no-nonsense design features aluminum and stainless steel components at all critical stress points, along with Okuma's patented Mechanical Stabilization System that maintains parts alignment over the long term. Line counter models are available in both right and left hand retrieve to serve all anglers.



Most advanced Ambassador Reels ever made Rugged knockdown construction every trophy hunter needs Unique bearing system Vented spool for easy casting Rugged Carbon Matrix™ Drag Designed to land your next record! Exciting technology for superior smoothness and control! The **Ambassador Record Round Baitcast Reels** is the most advanced Ambassador Reel **Abu Garcia** have ever made.



The **EZ Rod Organizer** is the perfect way to store and protect your valuable fishing rods. Store rods overhead and out of the way. It keeps kids and pets safe by storing in an overhead location. Each package includes 6 rod holders, 1-slatwall board and 4-screws for anchoring the slatwall. This product installs in minutes and organizes instantly. Install it under shelving. Install it above the garage door. Install it above your work bench. Install in any location that suits your needs. The EZ Rod Organizer is made of 1/4" strong steel and is great for organizing most fishing rods & reels, nets and gaffs. It is easy to see your supplies when they are organized using the EZ Rod Organizer.



Whether you are a weekend angler or a more seasoned tournament angler, boater or non-boater, you can trust the **Angler Innovations Rod Jacket** to keep your rods and reels untangled and protected. Each Rod Jacket features a durable, one-piece Neoprene construction that covers your fully rigged rod and also fits snugly around your standard or low-profile casting reel.

**ODU**

## ODU Tackle Box Fishing Line

**Seaguar Senshi:** This premium monofilament, engineered in Japan, provides the ideal balance of strength and sensitivity. It features extraordinary knot and tensile strength so you get solid hook-sets and can tackle heavy cover with confidence. Plus, Senshi is soft and supple, with excellent castability and flexibility. This sensitive, thin-diameter line easily detects structure, lure action and strikes for improved catch ratios.



**Sufix Siege** monofilament fires a lure farther, straighter and with less effort than you ever imagined. Advanced performance engineering assures unbeatable casting distance with sharpshooter accuracy. Patented abrasion technology provides tough-as-nails durability to tackle any heavy cover situation. Exclusive G2PrecisionWinding™ (extra-wide 100 and 330 yard spools) virtually eliminates line tangle for near-zero memory and effortless spooling. The result is a line that handles beautifully, casts like a dream, and thanks to an exclusive NanoTech Process, is up to 15X tough.



Designed for heavy cover yet suitable for all conditions. **Seaguar AbrazX** can be used in both Spinning Reels and Bait Casting Reels. The line has exceptional knot and impact strength and is extremely soft and sensitive for better feel and smoother casting. As with all 100% Fluorocarbon products, AbrazX is much less visible underwater than monofilament line and virtually invisible to fish. The line is also UV resistant, chemical resistant, non-absorbant, high-density and impervious to cold conditions.



When it comes to the pros **Sunline FC Sniper** is the line choice many of the pros depend on to cash a check week after week. Sunline FC Sniper is offered in line sizes 2-20lbs and comes in a Natural Clear color. What makes Sunline FC Sniper the line of choice; many of the pros depend on the uniform line diameter. Sunline takes extra strides to make sure the line size is uniform from start to finish giving you superior line performance. Sniper is a 100% fluorocarbon line that has a triple resin coating for softer supple handling, this is important if you are looking for a line to use in a spinning situation. Sniper also has a low memory that allows for longer use of the line. So if you are looking for a line that you can use for spinning applications to pitchin or flippin, Sunline FC Sniper is a line that you need to have spooled on your reel.



The ultimate line for strength and durability, **Vicious Braid** will excel where monofilaments and fluorocarbon fear to tread. Woven from the highest quality Spectra® fiber, it has virtually no stretch, allowing anglers to react to the slightest bite at any depth and set hooks with lightning speed. Our U.R.C.™ process helps with abrasion and makes it practically impervious to UV rays and water absorption. The perfect combination of power and finesses, Vicious® Braid is the line you can count on!



**PowerPro Moss Green Line:** A unique manufacturing process known as Enhanced Body Technology permeates this revolutionary braided line with a protective layer that will not peel off. This results in a line that is much stronger than steel and winds easily on to any type of reel without retaining memory. The smooth surface texture allows it to effortlessly sail quietly through the guides.



**ODU**



## ODU Tackle Box: Swimbaits, Crankbaits and Jerkbait



The **Matt Lures** lineup of swimbaits have proven to be fish catchers in the real-life world of tournament fishing. These ultra-realistic looking baits are compact and cast well and when they swim through the water they look like a bluegill, a sunfish, or a crappie, and big bass are always hungry for this kind of a meal. Imagine slowly swimming one of these realistic looking soft plastic lures past a brushpile or over submerged grass, hungry bass will be all over it!

The **Optimum Suspending Swimbait** has an incredible body rolling action with a vibrating knob tail. This shallow runner is designed to suspend in the strike zone longer. Most swimbaits tear due to the hook and swivel ripping into the body when a fish is hooked. Optimum's wire through design prevents the hook from moving up into the body. It's not just the outstanding kick and tail action this bait has, but the realistic look as well, that will produce fish.



The **Bill Siemantel Signature SPRO BBZ-1 Swimbait** has gained notoriety as being one of the most realistic lure of all times. Now SPRO offers a new advancement in the BBZ1 Swim bait Line-The New 6 inch BBZ1. SPRO's designers worked closely with Fishing Hall of Fame Inductee, Bill Siemantel, to design a more compact version of the hugely successful 8-inch model. They say that size matters and sometimes that size needs to be smaller. Largemouth, snook, reds and other gamefish will attack the 6-inch SPRO

BBZ1! You can work it with a steady straight retrieve or pause and jerk it for awesome S-turns and other realistic underwater aerobics.

The **Castaic Rock Hard Swimbaits** are crafted to precisely mimic the body shapes, textures and colors of the most prolific forage of large bass. Their triple-jointed construction and RealSwim technology provide them with some of the most authentic swimming motions possible - at fast or slow retrieves - and each bait also features Castaic's patented Magnetic Hook Holder and Tri-Claw Hook System.



The result of over five years' testing and 100 prototypes, the **Jackall Aska 60SR** is a squarebill crankbait featuring a thin fiberglass circuit board lip with no rattles. Other features include high-end hooks and a low ballast weight that allows the crankbait to revert to its original position and trajectory after bouncing off cover. Belly hook was designed to have less play to avoid tangling with the bill or rear hook.

The **Sebile D&S Crank** may be the most innovative crankbait to ever hit the market. This unique design utilizes a hook which pivots on an internal pin making it completely snagless. Here is how it works: When retrieved the hook point aligns with the flattened tail of the lure, but when a fish strikes the hook positions itself upward where the point is exposed for penetration. The pivoting hook will keep the fish from throwing the lure so you can safely land him.



The **Rapala X-Rap** is "all about the action." The versatility of the X-Rap allows an angler to impart a number of fish-catching actions in a single retrieve. Casts like a bullet for long accurate casts. Prominent scales and lateral line on the fuselage capture and flash light like a beacon. It can be fished both in an aggressive "Slashbait" technique or with a classic Rapala® wobble. The angler defines the cadence for maximum effectiveness.

The **Lucky Craft Humpback Minnow 50 SP** is the ultimate tool for the stream fisherman. One of a family of lures specifically designed by Lucky Craft for fishing streams and ponds. This small jerk bait was designed from the ground up to fish in current. It's flat belly and specially designed lip work together to produce an unbelievable natural action in current situations. It can be fished with a rapid or slow twitch and pause retrieve, depending on the mood of the fish.



**ODU**

## ODU Tackle Box: Traps, Spinnerbaits, Castable Umbrella Rigs and Buzzbaits.

Bill Lewis' legendary invention, the **Rat-L-Trap**, is recognized as the most popular, and consequently, the most imitated lure over the past 35 years. But imitation doesn't mean duplication. Just ask any of the "Who's Who" of top name Pros that used Rat-L-Trap imitations while competing against Boyd Duckett at the 2007 BASSMASTER® CLASSIC. Boyd wasn't paid to fish with the original Rat-L-Trap, he made that decision himself and 'BOY OH BOYD' was it the right one!



A popular forage for bass throughout most of the United States, juvenile bluegill tend to prefer to hide in and among grass, timber and various subsurface structure - exactly where bass are lurking and waiting for their next unsuspecting meal. Ultra realistic with lifelike scale patterns, gills and fins, the **Koppers Live Target Bluegill Trap** also has an enhanced rattle chamber which emits a harmonic frequency proven to attract hunting bass and gamefish like moths to a light.

**Stanley Vibra Shaft Spinner Baits:** Custom matching painted blades add a totally new look to the #1 selling Stanley Vibra-Shaft. With Patented Tapered Wire, the Vibra-Shaft is unmatched in water displacement. Moving more water with less effort makes a great spinnerbait. Tapered wire transfers all the vibration to the tip of the wire, where the blades are. That's what you feel when you reel the bait back in.

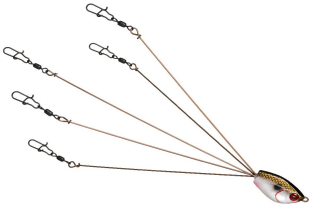


**Persuader 'EChip' Spinner Baits:** The voltage found in live bait is duplicated by the eChip mounted on this bait's hook. No power source needed and never wears out. Movement generates the charge. Bio-Flex Natures Scales Silicone Skirts and 5/0 long-shank Mustad Ultra point hooks. Available with two willow blades or with a Colorado and willow blade.

**Picasso School-E-Rig:** The best "castable" umbrella rig with great for open water applications and targeting schooling fish. The 6" wire length makes it the ideal length for rigging the larger plastic swimbaits and paddle tails. The fish head is constructed from lightweight, high impact resistant plastic with an imbedded nose swivel to prevent line twist and assure true running and function of the rig. It can be cast and retrieved at a steady pace or allowed to fall through suspended schools of fish. Made with American made premium components.



The new **YUMBrella Rig** from YUM capitalizes on the multi-rig phenomenon with a rig manufactured with "super wire," stainless steel that has been repeatedly heat-treated for strength and flexibility. The five super wire arms are attached with a true molded coupler for incredible toughness and durability, ensuring that the wire arms can handle more abuse than other rigs. Just ask Lance Walker, CEO of Browning Eyewear, who caught what could become the new Tennessee State Record for a bass weighing 14.8 pounds.



The **Revenge Buzzbait with clacker** is a topwater buzzbait lure that maintains all the great features of the original Revenge buzzbaits but possesses an additional clacker. The Revenge Buzzbait is simply a great buzzbait. The offset hook design offers a great hook-up ratio and the slow moving buzzbait blade offers anglers more control over the retrieval speed. Combine those features with the fantastic, bass catching colors and it is a fact that Revenge Buzzbaits belong in your tackle box.



Without a doubt the world's most innovative new buzzbait available today. **The Vision Honey Buzz** lure is jammed full of features that solves those age old problems of traditional buzzbaits. Revolutionary features like Vision's patented hinged hook that provides the highest hook-up to catch ratio. The Vision Honey Buzz bait provides amazing stabilization so your bait runs straight and true. The Honey Buzz offers a flexible two tier weighting system that takes all the leverage away and makes the bait virtually impossible for the fish to shake.

**ODU**



## ODU Tackle Box: Jigs (Hair & Skirted) and Blade Baits

The **Punisher II Hair Jig** is tied with Craft Hair, comes in a variety of sizes and colors, and is equipped with a 2/0 Mustad Needle Point hook. Designed for our friends who prefer a thinner wire hook, the Punisher II is flat on the bottom and in front. This forces the hook to ride up when the lure is resting on the bottom or being dragged through weeds, brush, or lay downs. The head is also poured with the line tie at a 60 degree angle which helps transfer power directly from the rod tip to the hook point. This results in deeper hook penetration and fewer lost fish.



The **Arkie Bucktail Muddler Collar Jig** is a unique, bucktail, ball-head jig with a muddler collar that causes the bucktail hair to flare out and create more action in the water. The bucktail hair is great for colder water, and many feel it provides a more natural, undulating action than a silicone or rubber skirt. An old-time favorite, bucktail jigs have been catching fish for years. Hand-painted and hand-tied, the Arkie Bucktail Muddler Collar Jig is available in a range of colors.

The **Picasso Fantasy Football Jig** has an almost completely recessed line tie to assure the jig "rolls" out of any rocky cover without hanging up. The textured head creates traction causing the jig to rock back and forth instead of just "skidding" or "skating" across the bottom. This gives the skirt and plastic trailer more action to entice a bass to strike. This jig also has a very vertical fall which makes it great for "stroking" or fishing vertical structure such as bridge abutments.



The **NorthStar Custom Baits Premier Hairy Craw Football Jig** features the lifelike silicone colors of Living Image, an Owner Light Wire Cutting Point Hook that is deadly sharp, and the natural flair of bucktail. There is no skimping on these jigs, the head is painted with a premium chip-resistant powder coat, given a glitter coat to compliment the skirt color, and baked at high temp for a quality, long lasting finish.



The **Stanley FlipMax** has a new hand cut rubber skirt that Stanley refers to as "a crawler skirt". Below the existing rubber skirt, an additional skirt in a different color has been added with wider-cut rubber strands. While submerged, the specially-cut thick rubber strands resemble crawfish legs. When pulled through the water the "legs" flare out realistically imitating a swimming crawfish. The flat, wide rubber legs displace more water causing a greater commotion and vibration that bass can't resist!



The **Binsky (Fishsense.com)** is the newest and brightest star on the blade bait market. It has a realistic shad design and an unmatched hard vibration that cannot be ignored. The key to this type of bait is to imitate an injured or dying baitfish. Most anglers use these baits in deep water with a vertical presentation, but fishing them in shallow water or near the surface can also work well. The Binsky - an all season lure. While the Binsky can be used all year round, it is most effective from fall thru winter and early spring. When water temperatures plummet gamefish school up in tighter groups in deeper water.



The basic **Silver Buddy** lure has a quality head weight cast on a highly reflective, mirror-finish stainless steel blade. The Silver Buddy lure uses a pair of split-shank treble hooks. One hook is set forward in the design of the lure and the other is set to the rear. The hooks are mounted to the lure through holes in the blade body. These hooks can be removed and replaced. Silver Buddy recommends the Silver Buddy original replacement hooks.



**ODU**

## ODU Tackle Box: Walleye Wise Baits and Crappie Catchers



**Reef Runner Deep Diver:** The ultimate trolling lures for walleye, as demonstrated on the trophy waters of Lake Erie. Proven "banana" body profile; aggressive wobble; incredibly durable high-gloss finish with unique colors; fitted with ultra-wide gap Eagle Claw? Aggressive "kicking" action gets lots of attention down deep. The wide lip digs hard, while the deeply curved body and loud

rattle create an irresistible underwater profile.

The **Northland THUMPER JIG** is the ultimate spinner jig! It's designed with a sleek minnow head, and features a patented "thumper" belly blade that adds flash and pulsating vibration to attract Walleye . . . and provoke 'em to strike! The THUMPER JIG is simple to fish. Cast and let them flutter down weedlines, rock ledges & brush piles, or troll and drift them slowly along the bottom. Swim 'em, hop 'em or drag 'em.



Designed with incredible attention to detail, the **Lindy Shadling** successfully emulates both the basic patterns and subtle undertones of a variety of common baitfish species. The secondary hues flash as the shadling swims and triggers savage strikes from walleye. Add ultra-realistic holographic eyes and predators don't mistake the Shadling for anything other than real prey.



The first true walleye crankbait, **Cotton Cordell's Suspending Wally Diver** is as deadly as ever. Everything about the Suspending Wally Diver from their legendary

action to their profiles and colors was expertly designed to entice walleyes to strike. In fact, the Suspending Wally Diver has also proven to catch largemouth and smallmouth bass as well. Model



The **Tiny Assassin's** unique "fat belly" design draws more strikes than conventional jerkbaits. A soft body texture delivers a fleshy feel that keeps fish hanging on longer. Fish it on top or below the surface, and you'll find the appealing tail action is extremely enticing to crappie. Crappie and other panfish love 'em, but the Assassin is also a killer for bass.



Designed by the king of crappie, Wally Marshall, the **Crappie Thunder Road Runner** sports enough pulsating action to trigger strikes from even the finickiest of slabs. One of the most noisy, flashiest and most productive crappie jigs ever, the Crappie Thunder is equipped with a soft tear resistant body designed to last longer than ordinary tubes, a bright, vibrating blade perfectly positioned so it doesn't interfere with hookups and a flared tail for a slower presentation and descent.



For crappies and smallmouth bass, the **Luck "E" Strike Swimmin' Minnow** is the hottest bait in the Ozarks. The Swimmin' Minnow's true-to-life minnow shape combines with its super-soft, high-action curly tail to produce some outstanding action. No tackle box is complete without at least one bag of Swimmin' Minnows!



**Mr. Crappie Slab Daddy:** I designed the Slab Daddy for the ultimate finesse presentation. Perfect for dock shooting, vertical jigging, slow trolling, long-lining, and casting. Also, Hand Tied Quality, Minnow Shaped Profile, Chenille Scent Holder and Special Tempered Hook will Bend, not break



**ODU**



## ODU Tackle Box: Topwater

Make a big splash with this perfectly balanced **Yo-Zuri Sashimi Popper** with a pulsating tail feather. The Yo-Zuri Sashimi Popper boasts a dual action technique—traditional pop and stop or "walk-the-dog" action—and color change technology. A floating type crankbait, the Sashimi Popper sits horizontally in the water for the best possible presentation.



A top water bass lure with attitude. The 2-3/4 inch **Rapala X-Rap Pop** is a big poppin, big splashing, big bass catching top water. With it's arched body shape design, the X-Rap Pop, makes a loud fish attracting splash with every snap. Even the slightest tug will bring the X-Rap Pop to life.

The new **ABT King Dawg** features a proprietary, single-jointed design that makes it easy to walk-the-dog effectively and generate explosive topwater strikes. No special talent required. Just twitch the King Dawg slowly and watch the jointed sections and forked tail create a perfect walk-the-dog presentation.



The **Yamato** is a revolutionary topwater/jerkbait from **O.S.P.** (Osprey Spiritual Performance) and Toshinari Namiki of Japan. Featuring dual line eyes, the Yamato provides the versatility of two lures in one for a devastating bass catching combo. The lower line eye enables the Yamato to produce the classic walk-the-dog action and with its concave nose it can also serve as an oversized popper for varying your retrieve.

The **Picasso Shad Walker** takes your frog fishing to a new category. It is designed to mimic an injured baitfish and is completely weedless. Walk The Dog over the thickest of slop, grass, and vegetation like no frog can do. It really shines in open water where it is more effective then a plastic frog and can be twitched, killed or Walk The Dog in a wide sweeping side -to - side action that teases the fish and pulls them from cover for vicious strikes. The versatility of this bait is endless.



**Optimum's Furbit the Frog & Poppin' Furbit:** Real Rabbit Fur Legs – Furbit's legs ripple and flutter in a manner that synthetic rubber or plastic legs never will. Flaring hair is perfect for Stop & Go technique. Features a molded-in belly weight and weights 5/8 ounce. Sealed off weight keeps water out and eliminates extra tuning. "Furbit" sports a #3 Colorado blade while "Poppin' Furbit" has a #3

willow blade attached for added flash and vibration. Perfectly balanced so it angles and sits on surface exactly like a real frog swims. Completely weedless!

**Booyah Pad Crasher:** One strength of many hollow body frogs is the lure's ability to walk back-and-forth like a Spook. Booyah designers created a "bass boat-style" belly for the Pad Crasher that makes walking the dog (walking the frog?) easy for any angler to accomplish. For working in the slop, a hollow body frog needs to maintain the right weight, one that creates enough disturbances to get plenty of notice but not so heavy it sinks into the stuff and gets snagged in the salad.



**ODU**

## ODU Tackle Box: Trout, Bass and Salmon Spoons and More



The **Bucktail Viper Spoons** from **Thundermist Lures** are the ultimate fish catching machines in any water, for any gamefish species and at any speed! Stamped from premium brass with hex patterns and plated with gold or silver for added flash, the Bucktail Viper Spoons are trailed by red

faceted beads, bucktail and three Mustad Ultra Point hooks linked together by ring joint and a single strand titanium line.

**Nichols Lake Fork Flutter Spoons** come with matching reflective Mylar trebles. Fishing the Nichols Lake Fork Flutter Spoon much different than fishing a regular jigging spoon, fishing this bait is more like retrieving a Texas rig with more exaggerated motions and longer strokes. Then watch your line on the drop and hold on! Fish cannot resist the flashing colors on the Nichols Flutter Spoons.



Trolling or casting spoons from **Savant Spoons** are hand-painted epoxy paint, baked and clear coated so they will not crack peel or chip. The glow patterns use Ultimate Glow paint that lasts for hours sometimes up to 8 hours and can be activated by any light source. Each 4.5" Savant, Needle Nose, and Great Lakes Jewels weight 3/4oz and can be trolled from 1.5 to 3.5mph and will maintain their wobble for their primary target Salmon and Trout.

The new **PK Troller** is a unique product with innumerable applications. The quick change clevis on the spinner allows the user to change blade sizes and colors to fit almost any water depth or condition. Adding a long willow leaf gives the added attraction of auditory cues at depth as it randomly connects with the lure body. The long shank bait hook allows for many different kinds of live and artificial baits, further increasing the versatility of this unique troller. This new troller is a "must have" in the toolbox of any angler looking for the catch of a lifetime.



hooks.

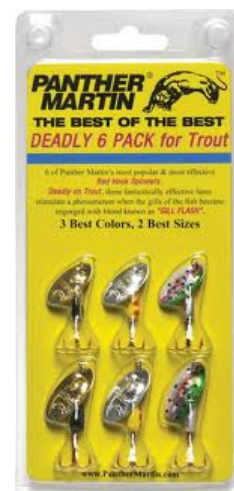
**Mepps Black Fury Spinnerbait** This bait has just enough flash! The bright colored dots on the black blades grab the fish's eye without spooking it. Ideal for night fishing, overcast or clear days and lakes and streams with heavy fishing pressure. Blade rotates close to the body for mid-depth retrieves. Fully dressed gold-plated treble

This lure is a must! John A. Green developed the **Mooselook Wobbler** in 1938 on Lake Mooselookmeguntic in Maine, from where it takes its name. Its a northeastern favorite in the lake regions of New England and Canada, and a classic and proven trout and salmon spoon for over 60 years.



**Strong Flies** are a "tournament-proven" design with a rattle head, a VMC Vanadium treble hook, and a knarl guard. The knarl guard serves as protection for the fly and the extra heavy 50 lb monofilament leader. Best of all, the fish like this fly. Team **Dreamweaver** used prototypes of this fly to win the 2004 Manistee "Big Boys" Salmon Splash. If they can beat some of the best salmon fishermen in the Great Lakes with this fly, it is good enough for the rest of us.

Billed as "The Best of the Best," **Panther Martin's Deadly 6-Pack** for trout has a devastating effect on this species of fish. Deadly on trout, these fantastically effective lures simulate a phenomenon when the gills of the fish become engorged with blood.



**ODU**



## ODU Tackle Box: Tackle for Toothy Critters



The **Classic Grandma Lure** is designed for casting or trolling and is excellent for twitching. Whether fresh or salt water this bait will help you catch many fish, and just maybe the prize fish you were hunting for. The Grandma is a very durable lure. It is able to withstand bites from the tooty Muskie and Barracude because of its high impact plastic body, and the extra high impact lip. With the classic model you can dive in down to 5' - 8' with standard braided line or mono.

it fast, slow or erratic. Sniffs out strikes from finicky fish. Rocks back and forth on descent. Nearly indestructible, ABS plastic construction. The devil's own plastic jerkbait! ERC's Hell Hound Jerkbait is easy to use and versatile.

**ERC Hell Hound Jerkbait:** Easy to use and versatile jerkbait Work



Designed by hall of fame angler Joe Bucher, the **Buchertail Magnum Bigfoot Tinseltail Spinners** produce loads of strike-provoking action pike, musky and other gamefish can't resist. Employ a fast retrieve once this Buchertail Magnum Bigfoot Tinseltail Spinner hits the water, and its free-spinning, fluted, size 12 blades will provide plenty of flash, rattle and thump while the triple-long Magnum Tinseltail seductively pulsates.



**Llungen Lures Llungen Tale Single 8 Spinnerbait:** Built for speed Molded in line keel weight prevents spinning and line twisting Durable, glitter

impregnated silicone skirt Heat shrink hook design Single Size 8 Indiana blade Llungen Lures Llungen Tale Single 8 Spinnerbait is built for speed with a silicone skirt and molded in line keel weight to prevent spinning and line twisting. The silicone used for the skirt is more durable than rubber skirts used on conventional lures, and it's impregnated with flashy glitter to reflect light and bring the Single 8 lure to life. Another

unique feature is the Single 8's heat shrink hook design. This musky spinnerbait's "strait back" hook makes a huge difference in the Single 8 lure's ability to fish through the weeds and increases hook ups.



The **Tyrant Lola's** rotating head and tail blades along with the stationary mid body produces the vibration and plop that drives top water bass, big pike and muskies crazy. Simply cast and retrieve! Made with Tyrant's high impact poly and through wire construction.

**Storm Thunderbeast** is designed for big fish triggering characteristics under a variety of retrieves. On a straight retrieve, the tail swims in a wide arc with lots of vibration. Pause and the "Beast" sinks slowly, head down with the tail swimming in wide pulsating arcs. A jerking retrieve creates a level track with added body roll. Heavy duty hardware and premium VMC hooks. Through wire construction and integrated hard core insert resists tearing.



**ODU**

## ODU Tackle Box: Plastic Baits A to Z (Part 1)



The **Gambler Cane Toad** is the ultimate swimming toad. Designed to give maximum splash at slower retrieve speeds. The Cane Toad incorporates a larger body to hold a bigger hook and thinner profile for better hook penetration. The Cane Toad will result in more strikes and more hook ups. Try the Cane Toad today and see why big bass just can't help but eat this toad.



The **Gene Larew Three Legged Frog** is one of the more unique soft bodied frogs on the market. What makes this frog so unique is it is made from two styles of plastic. The top part of the Three Legged Frog is made of a floating plastic while the belly and legs are made from a standard soft plastic that gives this frog all the action needed to attract vicious topwater strikes.



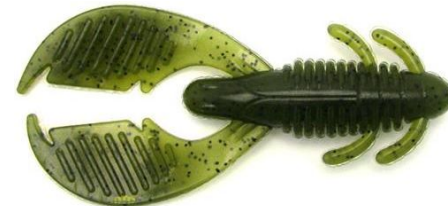
The 4" **GrandeBass MUTANT** is one of the most versatile baits on the market today. The MUTANT has all the inviting features that trigger bone-jolting strikes. The MUTANT features a ringed body that releases bubbles when in action, forward paddle legs that produce water "thumping" vibration and creature-like appearance.

As great a fish catching freak bait as **Lunker City Ozmo** is right out of the bag, it's also designed with adjusting to conditions in mind. Morph this heavy salt content creature bait into whatever configuration you need to catch fish in the cover, depth and conditions you're faced with! Below are just some of the variations that our field staff has done well with.



To a bass, a crawfish is like a juicy steak lying on the bottom. Not only are they a quick easy meal, but they're tasty and loaded with nutrition, which is why after a day on the water your livewell is so often littered with pieces of these abundant little critters. **PowerTeam's Diesel Craw** is the "filet mignon" of the underwater world. Specially cut grooves in the belly of this bait trap air bubbles that release as it hits and hops along the bottom. Combined with fluent motion of the skirt and meaty claws that rise in a defensive position, this 4" bass magnet is #1 on the menu for bass of all sizes. What are you gonna serve the big girls the next time you hit the water?

The **Reins AX Craw** has a great action that does not suffer even at very slow speeds. Reins products have a unique scent that make fish hang on longer. The Ax Craw can be Texas rigged or Carolina rigged by itself or used as a trailer.



The **Keitech Fat Swing Impact** is a soft plastic swimbait designed to replicate the profile and movement of small forage fish that bass prey upon. For several years the Keitech Swing Impact Swimbait was a secret of many west coast anglers. Much to their dismay, the word has slowly spread across the country and the results make this bait much more than idle dock talk.



With its long slender profile the **Wave Fishing Tiki-Shadick** resembles a favorite baitfish for several species of fresh and saltwater fish. Its profile enables it to dart with erratic action through water, imitating an injured baitfish.



finicky bass when the big swimbaits fall short.

The **Reaction Innovations Little Dipper** swimbait rolls side to side and wiggles it's tail. Rig the Reaction Innovations Little Dipper weedless, or a swim bait jig head, with a weighted swim bait hook, or use it as a trailer for your favorite swim jig. The Little Dipper is the perfect bait for

**ODU**



## ODU Tackle Box: Plastic Baits A to Z (Part 2)

The **V&M 11 inch Hogwild Worm**, like the 14 inch bayou giant, is a large reaction strike worm bait. Unlike the Bayou Giant, the Hogwild Worm proportionally has more body and less tail. The ribbed body and shorter tail offer a unique action, mimicking an eel.



John Crews and **Missile Baits** has put a new twist on worms. The **Tomahawk** has a unique double tail that ensures plenty of action even at the slightest twitch. The tapered head and Missile grip ribs allow for great hook sets. Great for Texas rigs and Carolina rigs. Try it on your shaky head rig for a unique new look.

**Lake Fork Trophy Lures Hyper Lizard:** Unique segmented body Thumping paddle tail Strike-enticing action and vibration Tempt 'em with a big meal like the Lake Fork Tackle Hyper Lizard and even lethargic fish will be hitting hard. Designed with a unique segmented body, fluttering appendages and an oversized, thumping paddle tail which combine to produce plenty of strike-enticing action and vibration.



The **Zipper Zip Zit** is a floating tube type bait. It is an effective bait for all applications such as shakey head, flipping, and drop shot. Flat on both sides with single zippers down each side, allows a more "lazy" presentation than does the regular tube. Since this bait floats and its tail

stands on end, it is deadly.

**Power Teams Lures Bully Grass Devil:** We all know that trophy bass love the shade and protection of heavily matted vegetation. If you like the rewards of fishing the thick stuff, then it's time for you to make a deal with the devil, The Bully Grass Devil. Grab a heavy bullet weight, a heavy wire hook and Texas rig a Bully Grass Devil on some strong line. Punch through those thick mats to the trophies lurking below and hold on tight. The Bully Grass Devil will get them on the end of your line...it's up to you to slam back and get em out!



The **Culprit Creature Craw's** oversized claws create abundant flapping action and a "thump" felt on the retrieve, similar to a spinnerbait. The claws are securely attached "mid-body", concentrating the bite at the hook, eliminating the problem of short strikes that are common when claws are positioned away from the hook. The Creature Craw excels in low visibility conditions, such as muddy water, heavy clouds or thick cover.

After already having one of the best 5" Stick baits on the market (our 5" Tiki-Stick), we got with our pros to find a way to make it even better. Out of that collaboration has come another home run for **Wave Fishing...**The new **Super Soft Pro Series!** Other than the obvious (the fact that this version is softer than our original formula) what makes this bait different is the insane action, along with increased fall rate and castability. As always, every bait is infused with loads of salt and our world famous scent, MOLOPO.



So what makes this Stick so special? It's the addition of an O-Ring that is inserted into the middle of the Wacky Stick when it is manufactured. **Big Bite** is the first company to offer you a **Wacky Stick** that can be wacky rigged with no additional tools. The Wacky Stick eliminates the need to have an O-Ring tool or split ring for wacky fishing. With the O-Ring already in the Wacky Stick, all you do is take your favorite worm hook and hook through the Wacky Stick and start fishing.

**Poor Boys Erie Darter:** They are the best kept secret in tournament fishing. They are "killer" baits in any water. You can fish them like a tube, Carolina or Texas rig them, fish them weightless and some even drop shot them. One of stores when asked how to fish them says - there is no wrong way to fish them.



**ODU**



© Kathy Barker

**ODU**